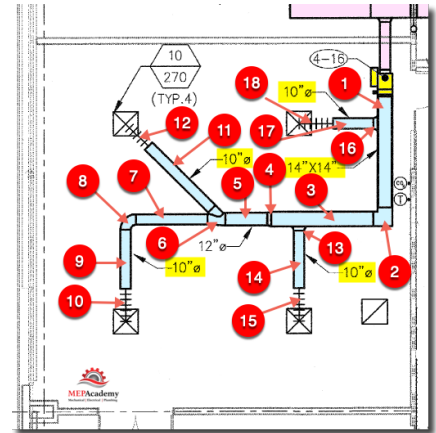


Sheet Metal Ductwork Takeoff - Practice Test #3

VAV Low Side Ductwork #3

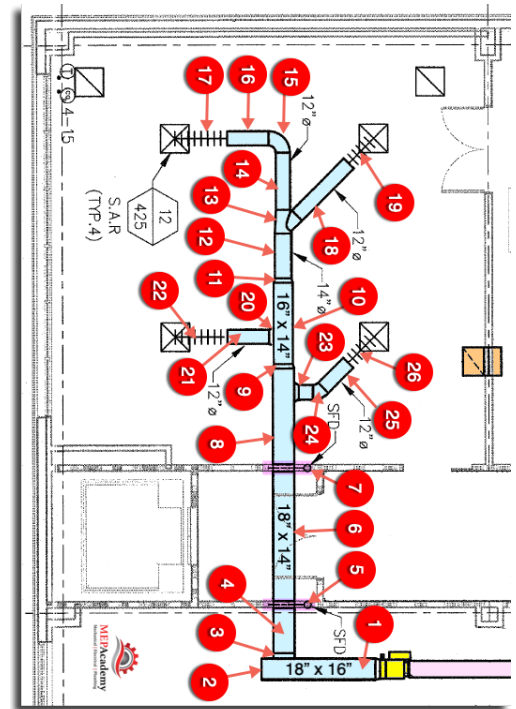
VAV Low Side Ductwork #3 – Practice Test #3		
Item #	Duct or Fitting Description	Size
1		
2		
3		
4		
5		
6		
7		
8		
9		
10		
11		
12		
13		
14		
15		
16		
17		
18		



What is not shown in the image, but you should always include, are volume dampers at each individual branch connection to an air distribution device. This allows for the adjustment of airflow.

VAV Low Side Ductwork #4

VAV Low Side Ductwork #4 – Practice Test #3		
Item #	Duct or Fitting Description	Size
1		
2		
3		
4		
5		
6		
7		
8		
9		
10		
11		
12		
13		
14		
15		
16		
17		
18		
19		
20		
21		
22		
23		
24		
25		
26		



VAV Low Side Ductwork #5

VAV Low Side Ductwork #5 – Practice Test #3		
Item #	Duct or Fitting Description	Size
1		
2		
3		
4		
5		
6		
7		
8		
9		
10		
11		
12		
13		
14		
15		
16		
17		

