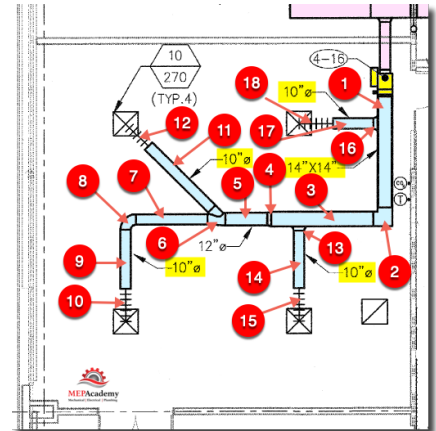


Sheet Metal Ductwork Takeoff - Practice Test #3 - Answers

VAV Low Side Ductwork #3

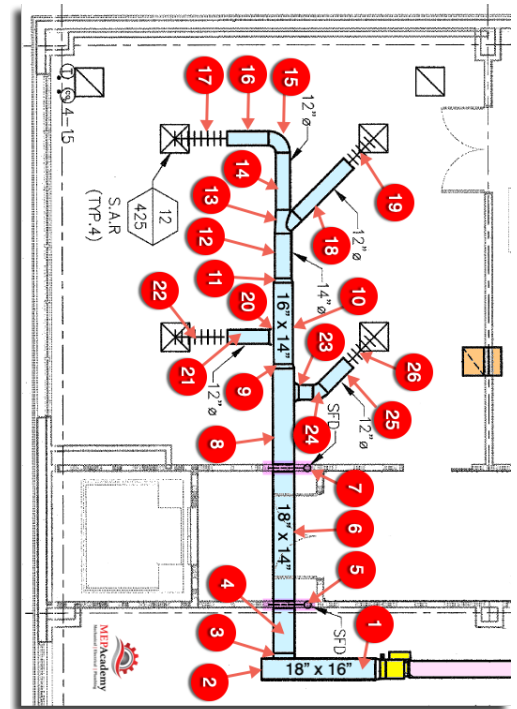
VAV Low Side Ductwork #3 – Practice Test #3		
Item #	Duct or Fitting Description	Size
1	Straight Duct	14" x 14"
2	90-Degree Elbow	14" x 14"
3	Straight Duct	14" x 14"
4	Square to Round	14" x 14" to 12"
5	Round Duct	12"
6	Reducing Tee-Wye	12" x 10" x 10"
7	Round Duct	10"
8	90-Degree Elbow	10"
9	Round Duct	10"
10	Flexible Duct Connector	10"
11	Round Duct	10"
12	Flexible Duct Connector	10"
13	Start Collar (Spin-in)	10"
14	Round Duct	10"
15	Flexible Duct Connector	10"
16	Start Collar (Spin-in)	10"
17	Round Duct	10"
18	Flexible Duct Connector	10"



What is not shown but you should always include are volume dampers at each individual branch connection to an air distribution device. This allows for the adjustment of airflow.

VAV Low Side Ductwork #4

VAV Low Side Ductwork #4 – Practice Test #3		
Item #	Duct or Fitting Description	Size
1	Straight Duct	18" x 16"
2	End Cap	18" x 16"
3	Tap	18" x 14"
4	Straight Duct	18" x 14"
5	Smoke/Fire Damper	18" x 14"
6	Straight Duct	18" x 14"
7	Smoke/Fire Damper	18" x 14"
8	Straight Duct	18" x 14"
9	Transition	18" x 14" to 16" x 14"
10	Straight Duct	16" x 14"
11	Square to Round	16" x 14" to 14"
12	Round Duct	14"
13	Reducing Tee-Wye	14" x 12" x 12"
14	Round Duct	12"
15	90-Degree Elbow	12"
16	Round Duct	12"
17	Flexible Duct Connector	12"
18	Round Duct	12"
19	Flexible Duct Connector	12"
20	Start Collar (Spin-in)	12"
21	Round Duct	12"
22	Flexible Duct Connector	12"
23	Start Collar (Spin-in)	12"
24	45-Degree Elbow	12"
25	Round Duct	12"
26	Flexible Duct Connector	12"



VAV Low Side Ductwork #5

VAV Low Side Ductwork #5 – Practice Test #3		
Item #	Duct or Fitting Description	Size
1	Transition	18" x 12" to Box Size
2	Straight Duct	18" x 12"
3	Square to Round	18" x 12" to 12"
4	Round Duct	12"
5	Reducing Tee-Wye	12" x 10" x 10"
6	Round Duct	10"
7	90-Degree Elbow	10"
8	Round Duct	10"
9	Flexible Duct Connector	10"
10	Round Duct	10"
11	Flexible Duct Connector	10"
12	Start Collar (Spin-in)	10"
13	Round Duct	10"
14	Flexible Duct Connector	10"
15	Start Collar (Spin-in)	10"
16	Round Duct	10"
17	Flexible Duct Connector	10"

