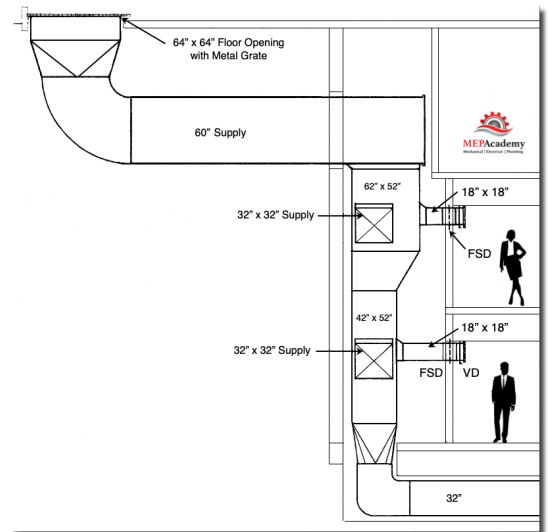


Sheet Metal Ductwork Takeoff - **Test #2**

Riser Ductwork #1

Remember to exclude the 32" x 32" branches from your takeoff. Start at the 64" x 64" floor opening.

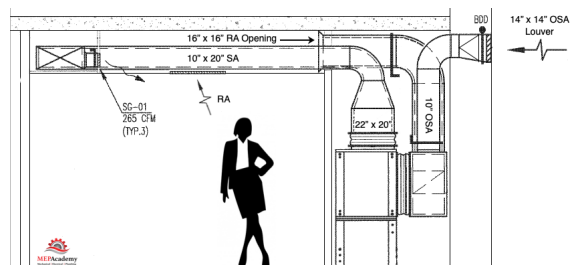
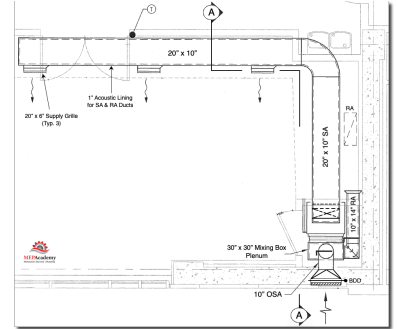
Riser Ductwork #1 – Test #2		
Item #	Duct or Fitting Description	Size
1		
2		
3		
4		
5		
6		
7		
8		
9		
10		
11		
12		
13		
14		
15		
16		
17		
18		
19		
20		



Vertical Fan Coil - Supply, Return & OSA Ductwork #2

Remember to start with the Supply Air Ductwork & Fittings, then the Return and finish with the OSA (Outside Air).

Vertical Fan Coil Supply, Return & OSA Ductwork #2 – Test #2			
Item #	Duct or Fitting Description	Size	System
1			
2			
3			
4			
5			
6			
7			
8			
9			
10			
11			
12			
13			
14			
15			
16			
17			
18			
19			
20			
21			
22			
23			
24			
25			
26			
27			
28			
29			



Rooftop Packaged Unit Ductwork #3

Start with the Supply Air.

Rooftop Packaged Unit Ductwork #3 – Test #2		
Item #	Duct or Fitting Description	Size
1		
2		
3		
4		
5		
6		
7		
8		
9		
10		
11		
12		
13		
14		
15		

